

Apprenticeship Training Programme

Phase 1: With Employer

Induction Training
Introduction to Health & Safety
Introduction to Tools & Equipment
Introduction to Basic Skills

Phase 2: Delivered in Training Centre (20 week)

Course Content:
Induction
Introduction to Pipefitting
Thermal Processes
Pipe Processes
Pipe Installation
Technical Drawing

Phase 3: With Employer

Work Based Training and Assessments

Phase 4: Delivered in Training Centre (10 weeks)

Course Content:
Introduction to Pipefitting
Thermal Processes
Pipe Processes
Pipe Installation
Technical Drawing

Phase 5: With Employer

Work Based Training and Assessments

Phase 6: Delivered in Training Centre (10 weeks)

Course Content:
Introduction to Pipefitting
Thermal Processes
Pipe Processes
Pipe Installation
Pipe Drawing Development

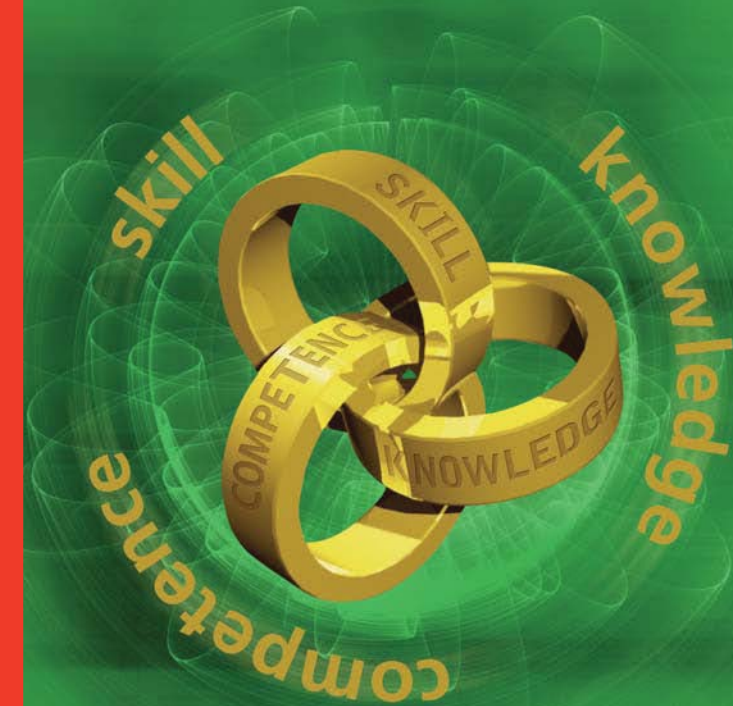
Phase 7: With Employer

Work Based Training and Assessments

The overall duration of this apprenticeship is a minimum of 4 years provided all phases are successfully completed. On successful completion of the programme the learner is awarded a Level 6 Advanced Certificate Craft - Pipefitting

Ver 2

The Craft of Pipefitting



For further information please contact your local Education & Training Board Training Centre or log onto www.SOLAS.ie



Ireland's EU Structural and Investment Funds Programmes 2014 - 2020

Co-funded by the Irish Government and the European Union



EUROPEAN UNION

Investing in your future
European Social Fund

 **Apprenticeship**
KNOWLEDGE | SKILLS | COMPETENCE

What is a Pipefitter?

Pipefitters install, repair and maintain high and low-pressure pipe systems used in commercial and industrial installations. They work on piping systems that carry all kinds of liquids, gaseous and solid materials. They provide a wide range of services including welding and fabrication in a variety of industries.

Pipefitting can be carried out in construction sites, oil refineries, chemical plants, breweries, power plants, food processing plants, paper mills, ships, factories and a host of other facilities.

Pipefitters require many skills including:

- Working with a variety of specialised hand and power tools
- Knowledge of a range of piping systems
- Performing a range of welding processes
- Interpreting pipefitting drawings and specifications
- Planning and organising the installation of piping systems
- Inspecting and testing of piping systems and fault diagnosis
- Performing routine maintenance and repairs on piping systems
- The environment is often noisy and involves the use of equipment and machinery so due care and adherence to Health and Safety regulations is mandatory.

Personal Qualities and Skills

As a Pipefitter you will need to be physically active and to be able to work with your hands. An awareness of health and safety and good housekeeping is essential as well as attention to detail.

The Pipefitter must have the ability to:

- Plan and organise
- Communicate effectively
- Solve problems
- Work independently and as part of a team
- Show a positive attitude
- Demonstrate good work practices including time keeping, tidiness, responsibility, quality awareness and safety awareness

Aspects of work

- Learning and developing new practical craft-related skills, knowledge and competence
- Working with and learning from experienced Craftspersons
- Seeing a job through from start to finish
- Comply with Health and Safety requirements
- Working with technical drawings and diagrams
- Using tools or machinery to fabricate industrial components
- Accuracy and attention to detail
- Being well organised and careful with practical tasks
- Working at heights
- Lifting or carrying heavy items
- Taking responsibility for own learning, including the allocation of study time
- Being physically active
- Passing all your phase exams (theory, practicals, skills demonstrations)
- Working in a noisy environment
- Bending and kneeling
- Working in cramped and awkward spaces
- Earning as you learn

How to become an Apprentice

- You must obtain employment as an apprentice in your chosen occupation.
- The employer must be approved to train apprentices.
- The employer must register you as an apprentice within two weeks of recruitment.
- In certain crafts, apprenticeship applicants are required to pass a colour vision test approved by SOLAS.

Entry Requirements

The minimum age at which the employment of an apprentice may commence is 16 years of age.

The minimum educational requirements are:

1. Grade D in five subjects in the Department of Education & Skills Junior Certificate Examination or an approved equivalent,

or

2. The successful completion of an approved Pre-Apprenticeship course

or

3. Three years' work experience gained over sixteen years of age in a relevant designated industrial activity as SOLAS shall deem acceptable

It should be noted that these are the current approved **minimum educational requirements** for apprenticeship programmes, however, previous experience of the following subjects would be an advantage but not essential: Mathematics, Technical Drawing/Graphics, Metalwork, Construction Studies, Engineering, Physics, Chemistry and Technology.

Opportunities on Qualification

On successful completion of the apprenticeship programme, apprentices are qualified to work within the recognised trade or profession.

Where craftspersons have the necessary ability and initiative, opportunities are available for advancement. These include advanced technology courses and management courses which are available in Institutes of Technology, Schools of Management and Professional Institutes.

Many craftspersons use their qualification as a platform to launch careers such as engineers, managers, owners of businesses and instructors amongst others.